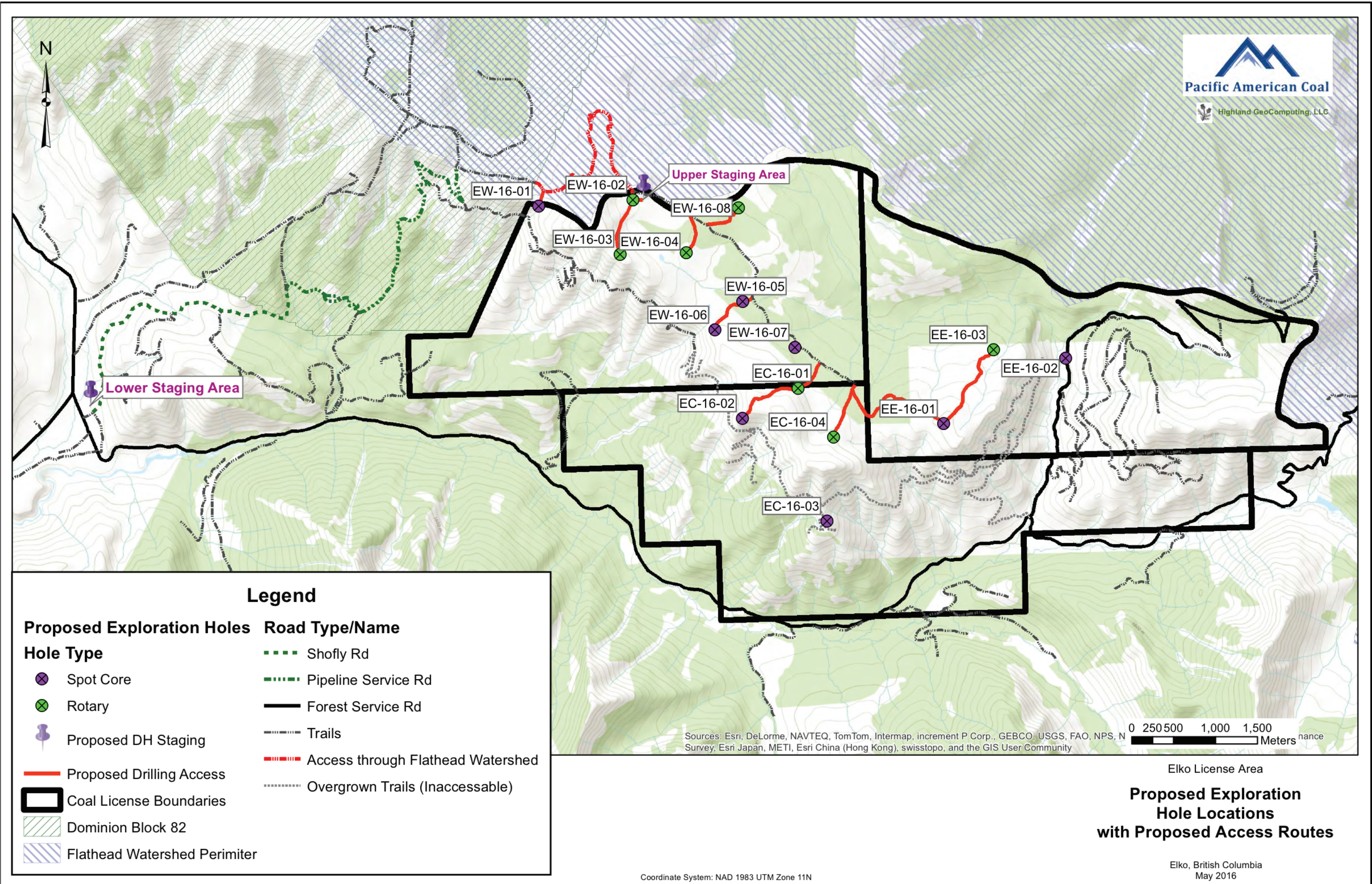


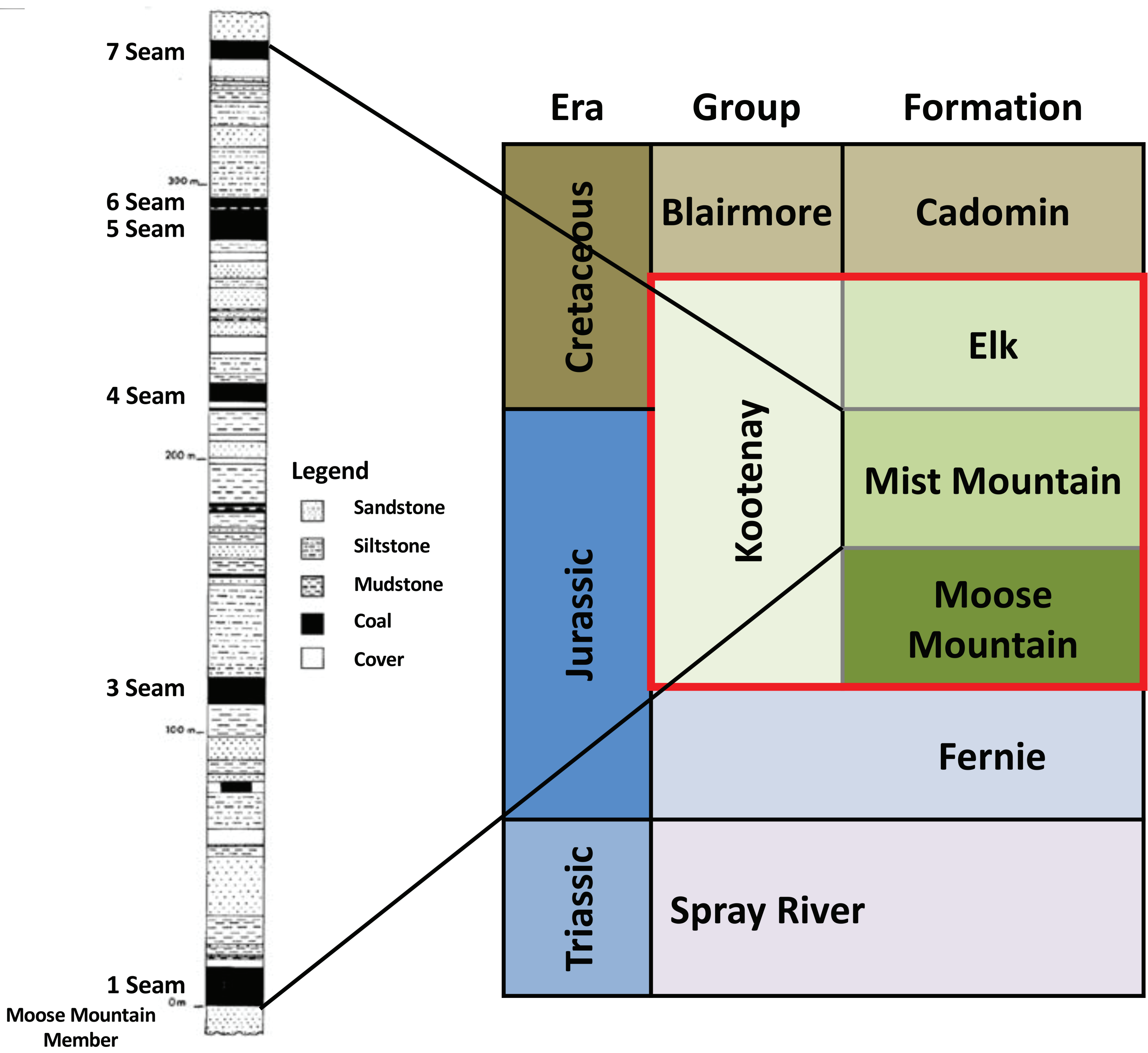
# 2018 EXPLORATION PROGRAM

FOCUS ON DEFINING JORC RESERVES AND  
EXTRACTING CORE



• Exploration program includes 8,500m of drilling

• Rotary and spot core drilling



THE EXPLORATION PROGRAM  
WILL AID IN

IMPROVE COAL QUALITY  
INFORMATION

DETERMINING DOWN-DIP EXTENT OF  
THE COAL BEARING STRATA

IDENTIFYING GENERAL STRUCTURAL  
TRENDS, FEATURES AND DOMAINS

COLLECTING COAL CORE FOR THE  
SM5/SM6 AND SM7 SEAMS